



REACHING HIGHER. GROWING DEEPER.



2017 Annual Report

Contents

3	HCCF Commits to Bringing Fiber Internet to the County
4	Addressing the Need for Preschool
5	Boys and Girls Club Project Benefits Youth
6	Stellar Commitment
6	Trace Society Takes Root
7	Scholarships
8	Dual Credit
8	Habitat ReSALEStore
8	Board Governance Training Strengthens Nonprofit Boards
9	2018 Board of Directors 2018 Board-Elect 2018 Community Volunteers 2018 HCCF Staff
10	2017 Endowment Funds
14	Financial Position
16	Gifts In Honor & In Memory
18	2017 Individual and Corporate Donors
19	Mission, Vision & Values

HCCF Commits to Bringing Fiber Internet to the County



Some of the people involved in bringing fiber internet to Harrison County are pictured here. HCCF board members Leslie Robertson and Barbara Middleton, as well as Harrison County Council Chairman Gary Davis, are in the front row. HCCF President and CEO Steve Gilliland, Mainstream Fiber Networks CEO Bryan Gabriel and project manager George Ethridge are in the back row.

For more than a decade, Harrison County community leaders have attempted to attract high-speed internet providers to our rural county. The goal has long been to have a reliable broadband service that can reach as many county residents as possible.

In 2014, as the result of a study and request for proposal initiated by the Chamber of Commerce of Harrison County and Connect Harrison County, Inc., Mainstream Fiber Networks (MFN) proposed to connect the county government buildings to each other and the internet via fiber optic cable. Linking the county buildings (now referred to as Phase I) created a fiber loop in and around Corydon. Phase I was financed entirely by MFN after securing long-term commitments to purchase services by the county and business customers along the initial route.

redundant connections. The route as engineered will have the capability to reach at least 75 percent and possibly as much as 85 percent of the addresses (both residential and business) in Harrison County.

Phase II, which was planned and invested in 2017, is well underway. Phase II will provide approximately 115 miles of 72-strand fiber optic cable “backbone” reaching outward into rural areas with the reliability of

MFN’s investment for Phase II is \$10 million. MFN asked for additional local investment of \$5 million, and in return, it agreed to expand to-the-home service at least one mile from the backbone. Harrison County government agreed to loan \$2 million for the project and HCCF loaned \$3 million in order to make it happen.



The availability of reliable fiber internet service will allow more students to access the internet for research and participate in e-learning days when school is not in session. Distance-based learning and online college classes will become possible for county residents. Also, opportunities to work from home will expand, and businesses located throughout the county will have the connectivity that has long eluded them.

All of the partners in this initiative are proud to be able to help bring a long-overdue service to our county.

We have loved Mainstream Fiber Internet services! Our home is a family of 5, of which 3 of those are school-age children. There have been days where each person has been connected and no one suffered from any delays or buffering. Whether it is for work, school, or entertainment, our family has been able to utilize internet services we can depend on without the hassle of limited data. It has been a very reliable service.

– ANGELA MARTIN
New Salisbury

Addressing the Need for Preschool

Jump Start

Armed with the knowledge of how vital early childhood education is to the success of an individual student and the community as a whole, the Harrison County Community Foundation embarked on an ambitious project to address kindergarten readiness and the need for quality preschool in the community. In 2014, HCCF began a 5 year pilot program to fund preschool for low-income children at several locations throughout the county.

The Jump Start program just wrapped up its third year providing full day preschool for children in low-income families at or below 185% of the Federal Poverty Level (FPL). In the 2016-2017 school year, 148 students participated in the program through ten different providers.

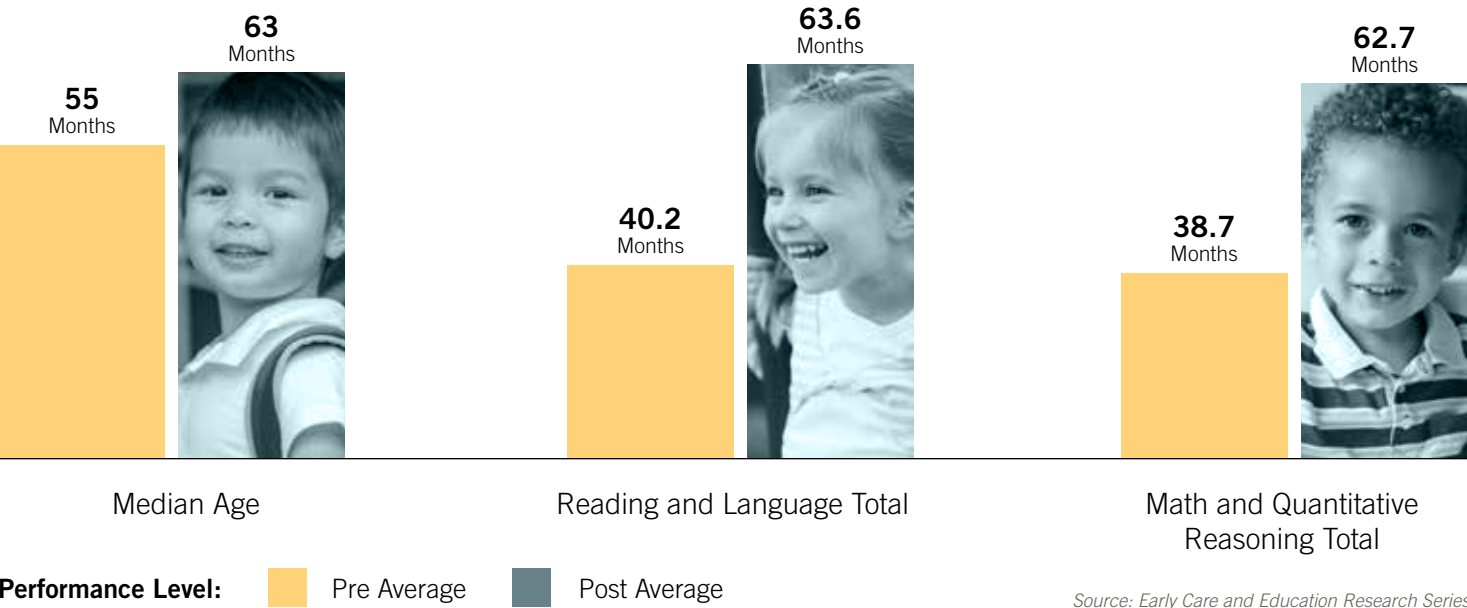
Students enrolled in Jump Start began the school year well below expected levels of reading and language development as well as math and quantitative development for their age.

On average, they were 15-16 months behind their peers. By the end of the school year, students had closed the gap and demonstrated skills consistent with their median age.

Using the ISTAR Kindergarten Readiness assessment, data confirmed the significant impact pre-K programs have on kindergarten readiness. In only eight months of high quality full day pre-K, the program reduced the percentage of students with two or more areas of delay by at least 46%.

HCCF has contracted with the Applied Research and Education Center at Indiana University Southeast to evaluate the program's effectiveness. To learn more, detailed evaluation reports are available on the foundation's website, hccfindiana.org, under the Preschool tab.

Harrison County Jump Start 2016-17 Mean Pre & Post Assessment Performance Compared to Median Average



Source: Early Care and Education Research Series

More Good News with On My Way Pre-K

In June 2017, the state announced Harrison County is one of the 15 additional counties eligible to take part in the On My Way Pre-K (OMWPK) program for the 2018-2019 school year. OMWPK not only funds preschool, but also provides up to 53 weeks of after-school care and daycare to participants. This program will only fund children from families who are at 127% of the FPL. Harrison County will have 50 openings available for the OMWPK program.

The addition of OMWPK funding, along with HCCF's Jump Start, will help us prepare all Harrison County students for success in school.



Two preschool students at Morgan Elementary display Easter eggs they found during an egg hunt at the school. The students received free, full-day preschool as a result of the Jump Start program funded by HCCF.

Boys and Girls Club Project Benefits Youth

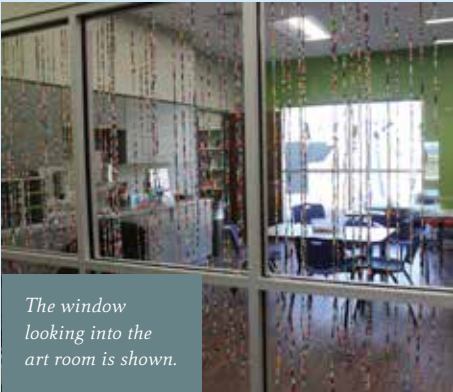
I love it here and don't want to leave. The new building is much better than the old one!

— CHESNEY
Member of the Boys and Girls Club of Harrison County

After years of struggling in an aging facility, the Boys and Girls Club of Harrison County (BGC) received a new home next door to the YMCA of Harrison County on Jenkins Court in Corydon. HCCF acquired the property and secured \$3 million for the building. Construction began in February 2017 and the BGC began moving into the new building at the end of the year.

The building project has enabled the BGC to grow the number of kids served to over 200, with room to expand even further. In addition, the new facility will broaden the types of activities available to them. The building is more than 19,000 square feet and includes a common area, art room, kitchen, several classrooms, gym and other features.

For more information about the BGC project and to see more photos, visit our website at hccfindiana.org. To learn more about the BGC, visit hc-bgc.org



The window looking into the art room is shown.



The BGC's common room features video game areas, pool tables and more.





Lisa Long, president of the Chamber of Commerce of Harrison County, and Sue Sanders cut the ribbon under the Judge Carlton and Sue Sanders Pavilion at Bicentennial Park as community stakeholders look on.

Stellar Commitment

In 2016, HCCF committed \$4 million (\$1 million for four years) to the Stellar Communities Program, a multi-agency partnership that developed a revitalization strategy for the town of Corydon. Multiple renovation, rehabilitation and preservation projects have started as a result. 2017 saw the completion of one of those projects, the new Bicentennial Park.



Photo by
Josh Evans,
Higher Eye Photography

Trace Society Takes Root

Trace used as a noun means a mark or indication of something from the past. As a verb, trace means to find or discover. Here in our community, Buffalo Trace was the first name given to a vital trail traveled by buffalo, Native Americans, explorers and settlers. That trace, built upon for generations, is still a relevant highway today: State Road 150.



Participants at the Estate Planning for Women by Women Trace Society event take notes and engage in discussion.

Because of the impact a trace — or the act of tracing — can have, HCCF chose the name Trace Society as a way to recognize those who leave a lasting gift through their will, trust, insurance or other arrangement. Trace Society members leave gifts that support their favorite causes. These gifts, like the generations that used Buffalo Trace, will build to leave a relevant and lasting legacy.

The significance of the Trace Society may not be fully apparent at first. However, as more people become members and the impact of their gifts take effect, the cumulative benefit will be easy to see. Current members include:

Anonymous (3)
Thomas Ewbank*
Kim Harmon
Pam Bennett Martin
Judith Elaine Miller
Kenton* & Phyllis Turner
Rita K. Windell*

Dan Briles & Maggie Abart Briles
Steven A. Gilliland
Sam Hays*
Mary Mayfield
Homer Quick
Robert & Tari Welch
Lottie Wiseman

* Deceased

Two special events were held for Trace Society members in 2017. Estate Planning for Women by Women was a workshop designed to present basic information especially relevant for women as they approach estate planning. The second event, The Strategy Behind HCCF Investments and How You Can Benefit, featured information on the foundation's investment strategy and the benefits of establishing a charitable gift annuity.

Scholarships

HCCF awarded \$581,750 in scholarship money to graduating high school students in 2017. The Adult Scholarship Program, which focuses on encouraging former students to return to school, awarded \$34,500.

To learn more about our scholarships and individual recipients, visit hccfindiana.org.



It means more to me than anyone will ever know and it further proves to me that hard work really does pay off in the end. I assure you that the investment you have made in my future will pay off. Thank you so very much for this opportunity!

— **SHELBY ADAMS**

Building Our Future Scholarship, Harrison County Farm Bureau, Inc. Senior High School Scholarship and Lanesville FFA Chapter Scholarship recipient, Class of 2017



Dual Credit

Students at Lanesville High School take notes during a dual credit criminal justice class during the 2016-2017 school year. In dual credit courses, students simultaneously earn college credit and high school credit. HCCF’s support of the three Harrison County school corporations’ dual credit programs is intended to maximize opportunities at little or no cost to the student. In the 2016-2017 school year, \$62,144 from HCCF went toward the dual credit programs, and 415 students took dual credit classes. Those students earned a combined amount of 4,140 credit hours, saving nearly \$900,000 in tuition at a university.



Board Governance Training Strengthens Nonprofit Boards

One of the ways HCCF is demonstrating its commitment to strengthening nonprofit organizations is by offering nonprofit board governance training. This training helps participants increase their knowledge and sharpen their skills in the most critical elements of board governance. Three training sessions were held in 2017.

All nonprofits submitting a grant application must have at least one current board member who has completed an HCCF-approved board governance training program.

2018 Board of Directors

Barbara Middleton Chair, Corydon	Leanne Cunningham Elizabeth	Brian LaHue Corydon
Brett Stilwell Vice-Chair, Corydon	Scott Estes New Albany, Horseshoe Southern Indiana Representative	Susan Pierson Georgetown
Leslie Robertson Secretary-Treasurer, Depauw	Brett Huett Corydon	Douglas Sellers Elizabeth
Pat Book Palmyra	Jeremy Kirkham Corydon	Joe Shireman Corydon
Pamela D. Carmichael Mauckport	Phyllis J. Krush New Salisbury	Mike Woertz Corydon



Seated L-R: Phyllis J. Krush, Barbara Middleton, Pamela D. Carmichael, Susan Pierson. Standing L-R: Pat Book, Joe Shireman, Mike Woertz, Jeremy Kirkham, Brett Huett, Brett Stilwell, Douglas Sellers. Not Pictured: Leslie Robertson, Scott Estes, Carol Hoehn, Brian LaHue, Jeff Shireman, Leanne Cunningham



Habitat ReSALEStore

In 2015, HCCF awarded Habitat for Humanity of Harrison County a grant to purchase, renovate and add on to a building along South Capitol Avenue so the ReSALEStore could relocate there. The ReSALEStore opened in that location in 2017. For more information about grants, visit hccfindiana.org and go to the Grants tab.



2018 Board-Elect

Carol Hoehn Corydon	Kevin Burch Corydon
Jeff Shireman Corydon	Chad Coffman Corydon
	Lacy Crosier Elizabeth
	Jim Isbell New Salisbury

2018 Community Volunteers

Sharon Uhl Corydon	Heather Walter Corydon
	Wilma Williams Corydon
	Kent Yeager Mauckport

2018 HCCF Staff

Anna Curts Grants Manager	Kristin Kennedy Communications Associate
Steve Gilliland President/CEO	Heather Stafford Director of Programs
Derrick Grigsby CFO	Sarah Travis Administrative Assistant
Kim Harmon Director of Development	

2017 Endowment Funds

For more information about endowments, visit hccfindiana.org and go to the Endowments tab. Click on Fund Lists for specific information.

* New Funds

Designated Endowment Funds

Betty R. Goldman Memorial Relay for Life Fund	Effie Kuhlman Charitable Trust Fund
Bicentennial Park Fund	Epiphany Lutheran Church Fund
Blue River Services Fund	Evelyn Crecelius Hospital Fund
C. J. Smith Memorial Endowment Fund	Ewbank Family Fund
Cedar Glade Fund	Family Health Center of Harrison County Fund
CFSI Harrison County Youth Philanthropy Fund	Frank O'Bannon Memorial Preservation Fund
Charles Eckart Family Charitable Donor Advised Fund	Frederick Porter Griffin Fund for Genealogy and History of Harrison County
Charles L. Reising, Sr. Land Conservation Fund	Furthering Youth, Inc. Fund
Comfort House Fund	Gary and Jean Geswein FFA Fund
Corydon Capital Preservation Alliance Fund	George L. Hess Family Harrison County Public Library Fund
Corydon Central Junior High School Capitalizing Designs Quilt Fund	George Rogers Clark Land Trust Fund
Corydon Central Jr./Sr. High School Library Fund	Habitat for Humanity Fund
Corydon Elementary School Library Fund	Harrison County 4-H Endowment Fund
Corydon Elementary School PTO Fund *	Harrison County Community Fund
Corydon Intermediate School Library Fund	Harrison County Community Services Fund
Corydon Presbyterian Church Memorial Fund	Harrison County Farm Bureau, Inc. Fund
Corydon United Methodist Church Board of Trustees Fund *	Harrison County Hospital Foundation Fund
Corydon United Methodist Fund	Harrison County Hospital Foundation General Fund
Dare to Care Fund	Harrison County Junior Achievement Fund
David R. Blank Memorial Fund	Harrison County Lifelong Learning Fund
Eckart Family Charitable Fund	

Harrison County Parks and Recreation Fund	Joe Rhoads Senior Citizens Center Fund
Harrison County Public Library Fund	Juan J. and Rudee Rodriguez Teacher Travel Fund
Harrison County Renaissance Fund	Kerri Suzanne Windell Fund
Hayswood Theatre Fund	Lanesville Community School Corporation Athletic Fund
Hazel A., Kassie, and Dennis Reasor Music Fund	Lanesville Elementary School Library Fund
HCCF Professional Development Fund	Lanesville Heritage Weekend Fund
Helen and Russell Petty Media Center Fund	Lanesville Jr./Sr. High School Library Fund
Heth-Washington Elementary School Library Fund	Lanesville Youth League Fund
Hoosier Hills PACT Fund	Leadership Harrison County Fund
Hosparus of Harrison County Fund	Leora Brown School Fund
Indian Creek Greenway Development Fund	Lions Club of Elizabeth, Indiana Fund
Indian Creek Woods Fund	Lucy Hornbeck Bless the Children Fund
Indiana University Southeast Nursing Lab Fund	Lynn and Glenn Thienel Musical Arts Fund
Jason Wallot Memorial Fund	



Marilyn M. Rhodes Memorial Fund	Saint John's Lutheran School Library Fund
Mauckport Cemeteries Fund	Saint Mary's Catholic Church Maintenance Fund
Morgan Elementary School Library Fund	Sanders Financial Markets Lab Support Fund
New Middletown Elementary School Library Fund	Sonny Hardin Memorial Endowment Fund
New Middletown Memorial Park Fund	South Central Elementary School Library Fund
Norbert and Carolyn Walther Endowment Fund	South Central Jr./Sr. High School Library Fund
North Harrison Elementary School Library Fund	St. Joseph Catholic School Library Fund
North Harrison High School Library Fund	St. Peter's Evangelical Lutheran Church Fund
North Harrison Middle School Library Fund	Sycamore Land Trust Conservation and Environmental Education Fund
Norton Children's Hospital Fund	The de Paul School Endowment Fund
Oak Grove Cemetery Fund	The Nature Conservancy – Blue River Project Fund
Paul Royse Memorial Fund	Town of Corydon – Cedar Hill Cemetery Fund
Personal Counseling Service, Inc. Fund	Town of Corydon Fund
Peter J. and Joan T. Schickel Lanesville Community School Maintenance Fund	Town of Elizabeth Fund
Regina C. Cammack Memorial Education Fund	Town of Elizabeth – Rose Hill Cemetery Fund
Robert H. Bush Memorial Fund	V. M. Albin Family Charitable Fund
Rotary Club of Corydon Indiana Fund	WHAS Crusade for Children Fund
Saint John's Lutheran Church Fund	YMCA of Harrison County Fund
Saint John's Lutheran Church Projects Fund	
Saint John's Lutheran School Fund	



Builder's Funds

Bennett & Bennett Insurance Builder's Fund	Neal and Cheryl L. Fisher Family Builder's Fund
Bill and Deb Thomas Family Builder's Fund	Pat & Cheryl Book Builder's Fund
Bush Enterprises Inc. Builder's Fund	Paul and Judy Beckort Builder's Fund
Chad and Abby Coffman Family Builder's Fund	Pendleton Family Builder's Fund
Chamber of Commerce of Harrison County Builder's Fund	Pete & Lorine Martin Family Builder's Fund
Dr. Lisa & Jeff Clunie Builder's Fund	Peter J. and Joan T. Schickel Family Builder's Fund
First Harrison Bank Builder's Fund	Phyllis and Leland Krush Family Builder's Fund
Gary and Jean Geswein Builder's Fund	Ray Churchill Family Builder's Fund
Harry R. and Barbara K. Middleton Family Builder's Fund	Robert L. and Teresa A. Schickel Builder's Fund
Jacobi Sales Builder's Fund	Rodefer Moss & Co. Builder's Fund
James & Daniel Shireman Builder's Fund	SEI Investments Builder's Fund
Joe & Cindy Shireman Builder's Fund	Sharon Uhl Family Builder's Fund
Jon & Soni O'Bannon Family Builder's Fund	Stephen & Jeannie Bodney Builder's Fund
Lanesville Heritage Weekend Builder's Fund	Steven A. Gilliland Builder's Fund
Larry & Leslie Robertson Builder's Fund	Tom and Phyllis Tucker Builder's Fund
Mark and Kathy Shireman Builder's Fund	Uhl Truck Sales Builder's Fund
	Ulrich & Vidra Attorneys Builder's Fund

Field of Interest Funds

Access to Recreation Fund
Animal Protection Fund
Arts Fund
Classical and Fine Arts Fund of Harrison County
Early Readers Fund
Environmental Fund
Health and Safety Fund
Historical Preservation Fund
Many Voices – One Community Fund
Recreation Fund

In November 2017, the Association of Fundraising Professionals-Indiana Chapter awarded Corydon resident Mekinley Elrod the Outstanding Youth Achievement Award and HCCF the Outstanding Foundation Award, accepted by HCCF President and CEO Steve Gilliland. Kinley and HCCF were honored during the Indiana Philanthropy Awards Dinner at the Indiana Roof Ballroom in Indianapolis. Read more at hccfindiana.org.



Scholarship Endowment Funds

Abby Sutherland Memorial Scholarship Fund
Adult Health Field Scholarship Fund *
Alex Simmons Memorial Scholarship Fund
Alphonse A. and Dolores A. Schmelz Memorial Scholarship Fund
Arthur and Lois Berlin Memorial Scholarship Fund
Bellarmine University Accel Program Scholarship Fund
Bellarmine University – Harrison County Scholarship Fund
Bernice T. Richardson Scholarship Fund
Bill Dougherty Family Scholarship Fund
Blaine and Geneva Wiseman Family Scholarship Fund
Bud and Betty Bennett Family Scholarship Fund
Canaan Timberlake Electrical Apprenticeship Scholarship Fund
Carl and Peggy Byerly 4-H/FFA Scholarship Fund
Carl and Wilma Ott Family Scholarship Fund
Carl H. and Mary C. Osbourn Wolford '59 Spalding Education Scholarship Fund
Carl Uessler Memorial Fund *

Chamber of Commerce of Harrison County Education Fund
Charles A. Kaake Scholarship Fund
Charles L. Shedd Scholarship Fund
Charles R. and Frances M. Chinn Memorial Scholarship Fund
Charlie L. Phillips Scholarship Fund
Clarence A. Sr. and Olivia T. Merk Memorial Scholarship Fund
Clyde E. Marrillia Memorial Scholarship Fund
Corydon Central Class of '66 Scholarship Fund
Corydon Central High School Class of 1959 Scholarship Fund
Corydon Central High School Scholarship Fund
Corydon Lions Club Dan Hardsaw Memorial Scholarship Fund
Crandall Masonic Lodge 591 Corydon Central Scholarship Fund
Crandall Masonic Lodge 591 Josh Beanblossom Memorial Scholarship Fund
Crandall Masonic Lodge 591 North Harrison Scholarship Fund

David Minter Memorial Scholarship Fund
Donald and Fredrica Dones Scholarship Fund
Doug Ferguson Memorial Scholarship Fund
Dr. Ken Oppel Memorial Scholarship Fund
Dr. Leonard Waite Memorial Scholarship Fund
Earl Saulman Memorial Scholarship Fund
Eleanor and Vallas Albin Scholarship Fund
First Harrison Bank Ivy Tech Scholarship Fund
Gary Haub Memorial Scholarship Fund
Harrison County Agricultural Memorial Scholarship Fund
Harrison County Farm Bureau, Inc. Agricultural Career Scholarship Fund
Harrison County Farm Bureau, Inc. Senior High School Scholarship Fund
Harrison County Hospital Foundation Ivy Tech Scholarship Fund
Harrison-Crawford BAR Association Scholarship Fund
Helen J. Cunningham Community Service Scholarship Fund
Herbert and Marilyn Gettelfinger Agricultural Scholarship Fund

Howard H. Haub Scholarship Fund
Indiana University Southeast Scholarship Fund
IUS Harrison County Hospital Foundation Scholarship Fund #1
IUS Harrison County Hospital Foundation Scholarship Fund #2

IU Southeast Harrison County Education Scholarship Fund
Ivy Tech-Prosser School of Technology Scholarship Fund
Jack and Evelyn Baker Scholarship Fund
Jack and Kenneth Miles Golf Scholarship Fund
Janice Uhl Taylor Scholarship Fund
Jefferson Masonic Lodge No. 104 William E. Falk Jr. Memorial Scholarship Fund
Jessie L. and Arlie L. Fogal Scholarship Fund

Joe E. Lieber Memorial Scholarship Fund
Jonathan Delaney Dickerson Memorial Scholarship Fund
Josh Long Memorial Scholarship Fund
Judy Smith Memorial Scholarship Fund
Kent Watson Baseball Scholarship Fund
Kenton and Phyllis Turner LDS Education Fund
Laconia Lions Club Scholarship Fund
Lanesville FFA Chapter Scholarship Fund
Lanesville Heritage Weekend Scholarship Fund
Lanesville High School Scholarship Fund
Lanesville Jaycees Kenneth Lopp Memorial Scholarship Fund
Larry A. Gettelfinger Memorial Scholarship Fund
Leora Elizabeth Eisenmenger Melton Memorial Scholarship Fund
Madge Ashton Memorial Scholarship Fund
Matthew D. Faith Memorial Scholarship Fund
Michael A. Bennett “Cool Guy” Media Scholarship Fund
Miles’ Fund
North Central Class of 1961 Scholarship Fund

North Harrison FFA Scholarship Fund
North Harrison Football Team PEP Scholarship Fund
North Harrison Girls Basketball Scholarship Fund
North Harrison High School Scholarship Fund
North Harrison Lions Clubs Scholarship Fund
North Harrison School Board Scholarship Fund
Patricia Laughlan-Ireland Memorial Scholarship Fund
Paul Cesar Memorial Scholarship Fund
Peter J. and Joan T. Schickel Scholarship Fund
Phil Pace Memorial Scholarship Fund
PNC Advisors Ivy Tech Scholarship Fund
R. William Baker Scholarship Fund
Ralph D. Best Memorial Scholarship Fund
Regions Bank Ivy Tech Scholarship Fund
Robert H. Weber Memorial Scholarship Fund
Robin Monroe Thieneman Wolfe Memorial Scholarship Fund
Sandra Albin LaDuke Memorial Scholarship Fund
Shireman Family Scholarship Fund

South Central High School Scholarship Fund
Spalding University Harrison County Scholarship Fund
Susan Frederick Franks Music Scholarship Fund *
Stacy Parsons Memorial Fund *
Susan Evans Austin Memorial Nursing Scholarship Fund
Talmage Windell Family Scholarship Fund
Tommy, Sarah and Bud Timberlake Scholarship Fund
Town of Crandall Scholarship Fund
Vicki Engleman Family Memorial Scholarship Fund
VisionQuest Scholarship Fund
Wilson Family Scholarship in Memory of T. J. and S. Morris Wilson Fund
Yvonne Fessel Panther Athletic Scholarship Fund
Zimmerman Family Memorial Scholarship Fund

To find out who has received HCCF scholarships, visit hccfindiana.org/scholarship-endowment-funds/.

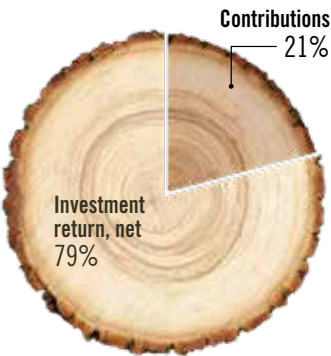


* New Funds

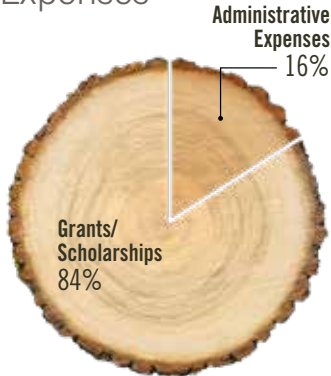
Financial Position

For The Year Ending
December 31, 2017

Revenue



Expenses

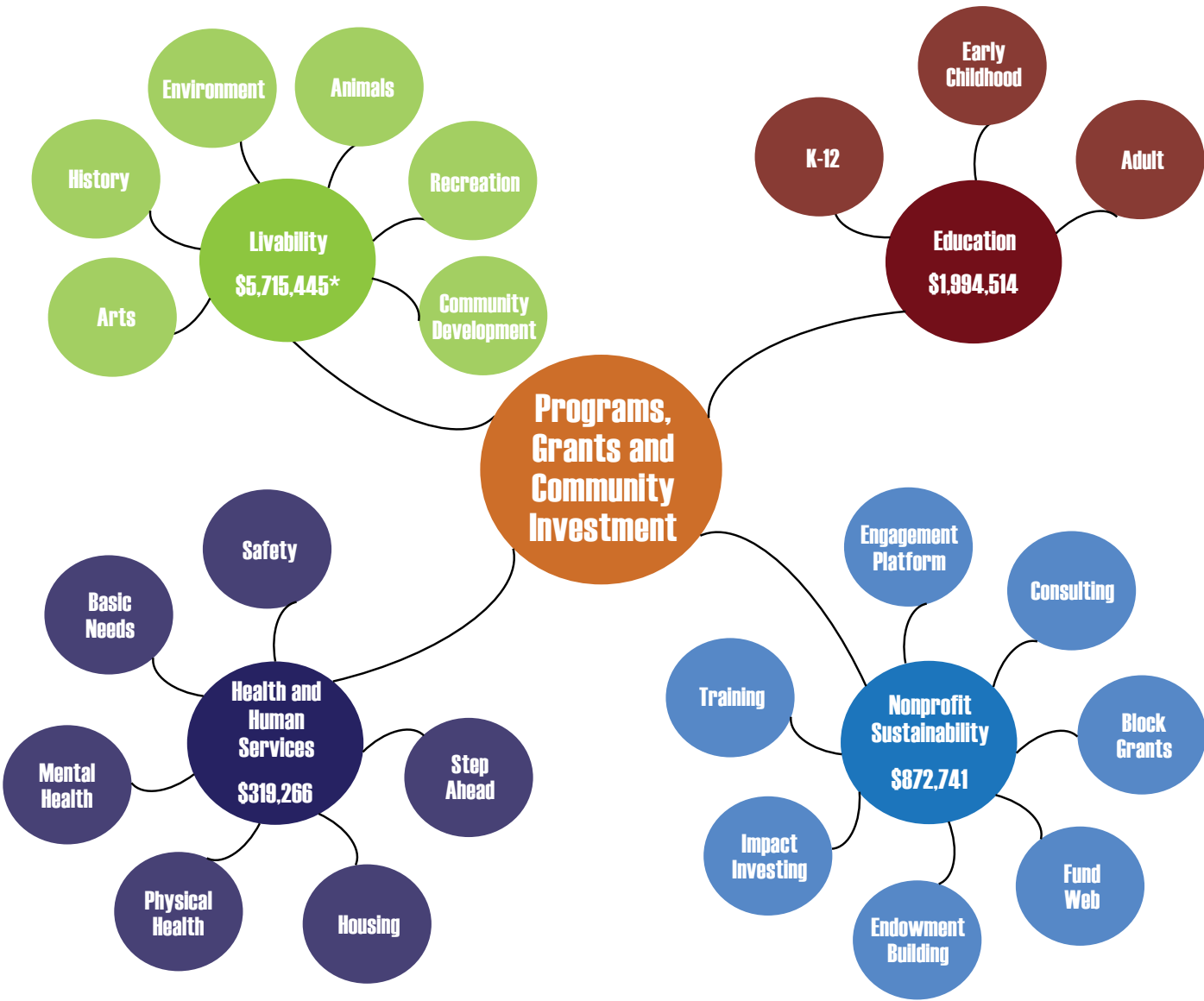


	Harrison County Community Foundation	HCCF Supporting Organization	HCCF Real Estate Supporting Organization	Consolidated
ASSETS				
Cash	\$463,710	\$482,538	\$12,462	\$958,710
Investments, at fair market value	\$24,121,942	\$167,410,336	\$0	\$191,532,278
PRI Receivable	\$0	\$1,856,900	\$0	\$1,856,900
Property and equipment, net	\$6,508	\$0	\$7,012,363	\$7,018,871
TOTAL ASSETS	\$24,592,160	\$169,749,774	\$7,024,825	\$201,366,759
LIABILITIES				
Accounts Payable	\$26,323	\$0	\$0	\$26,323
Note Payable	\$0	\$3,699,484	\$0	\$3,699,484
Promise to Give	\$0	\$0	\$2,260,000	\$2,260,000
Custodial Funds	\$2,048,021	\$104,267,941	\$0	\$106,315,962
Charitable Gift Annuity Payable	\$798,579	\$0	\$0	\$798,579
TOTAL LIABILITIES	\$2,872,923	\$107,967,425	\$2,260,000	\$113,100,348
TOTAL NET ASSETS	\$21,719,237	\$61,782,349	\$4,764,825	\$88,266,411

STATEMENT OF ACTIVITIES				
Beginning Unrestricted Net Assets	\$18,419,224	\$60,968,214	\$1,108,792	\$80,496,230
REVENUE				
Contributions	\$592,163	\$1,998,926	\$300,000	\$2,891,089
Contributions from Related Party	\$550,000	\$0	\$0	\$550,000
Service Agreement Income	\$968,290	\$0	\$6,000	\$974,290
Investment return, net	\$2,783,111	\$8,143,599	\$0	\$10,926,710
Interest and other income	\$2,337	\$13,777	\$32	\$16,146
TOTAL REVENUE	\$4,895,901	\$10,156,302	\$306,032	\$15,358,235
EXPENSES				
Grants/Scholarships	\$714,947	\$2,096,438	\$2,260,000	\$5,071,385
Grants to Related Party	\$0	\$550,000	\$0	\$550,000
Service Agreement Expense	\$7,200	\$966,774	\$0	\$973,974
Administrative Expenses	\$873,741	\$29,471	\$89,483	\$992,695
TOTAL EXPENSES	\$1,595,888	\$3,642,683	\$2,349,483	\$7,588,054
Excess of revenue over expense	\$3,300,013	\$6,513,619	(\$2,043,451)	\$7,770,181
ENDING UNRESTRICTED NET ASSETS	\$21,719,237	\$67,481,833	(\$934,659)	\$88,266,411

2017 Spending

* Excluding \$1.75M from
the Harrison County
Community Fund



Donations

	2017	1996 - 2017	Match 2017	Match 1996 - 2017
HCCF Public Donations	\$669,970.29	\$12,864,809.55	\$671,156.25	\$7,982,314.89
Horseshoe Casino Donations	\$8,005,703.25	\$182,735,804.55	\$0	\$0
TOTAL DONATIONS	\$8,675,673.54	\$195,600,614.10	\$671,156.285	\$7,985,314.89

Gifts in Honor or in Memory

HCCF is happy to list your gift as in memory or in honor of someone special. Please remember to denote that when you make the gift as well as direct what fund your gift is to be deposited.

We Value Your Name

We have carefully reviewed the names listed in our annual report, although with a listing of this length errors may occur. If your name has been omitted, misspelled or incorrectly listed, please accept our apology and let us fix the error by bringing it to our attention so that we can correct our records.

Code of Ethics and Conflict of Interest Disclosure

Members of the Board of Directors and staff of the foundation are committed to observing the highest standards of ethical conduct in the performance of our responsibilities. Our board, our staff and community volunteers sign a Code of Ethics Pledge and a Conflict of Interest Disclosure that guides all of our processes and decisions.

CF National Standards

HCCF has been confirmed in compliance with National Standards for U.S. Community Foundations.



Gifts In Honor Of

Roger Corley’s Birthday
Susan Pierson

Brian Keinsley
Michelle Logan

Pam Bennett Martin’s Birthday
Susan Pierson

**Marilyn Thieneman and
Roberta Robertson**
Priority Rehab LLC

Gifts In Memory Of

Joe Beaty Jr.
Steve & Linda Atherton
Mark & Amy Atkinson
Marcia Curtis
Bill & Karen Edde
Frances Ehrmantraut
Gary & Jean Geswein
Carole & Robert Graffon
Shirley Jones
Jerry Melton
James & Judith Mowry
North Harrison Community
School Corporation
Holly & Mark Sale
Clinton & Jo Ann Settle
Rose & David Stevens
Patti Walker

Joe Bliss
Andrew & Linda Abner
Maryland Austin
Randall & Marla Jo Baelz
Joyce Beard
Troy, Leah, & Logan Bensing
Millard Woodward Sr. & Diana
Brumley
Carla, Donnie, Miranda & Piper
Brunner
Nancy Casada
Tom & Katy Casper
Charlie Colton
Daphne Cotner
Leanne & Chris Cunningham
Jim & Jackie Davidson
LaDonna Frantz
Gary & Jean Geswein
Jane & Jerry Gettelfinger
Marcia Gliottone

Richard & Karen Harbeson
Richard, Wanda & Mike Harmon
Harrison County 4-H Forestry
Judging Team
Roger & Paula Hensley
Gerald & Yvonne Kay Jacobs
Susan Minton
O’Bannon Publishing
Ellen Pfeffer
Pfeiffer’s Jewelers
Rachel Schwartz
Andy & Melissa Shaffer
Vaughn & Linda Timberlake

Fred Cammack
First Harrison Bank Employees
& Board Members

Paula K. Craig
Anonymous

**Paul & Corinne Gettelfinger,
Larry Gettelfinger, James
Gettelfinger, Donna
Gettelfinger, Sarah
Gettelfinger, and Paula &
Kenny Craig**
Marilyn O’Connor

Janet Lea Davis
Cheryl Fisher

Doug Ferguson
Tammy Ferguson

Imogene Gerdon
Maryland Austin

Jamie Harmon
Kim Harmon

Sam Hays
Elizabeth Brownell
Marcus Rediker

Claude & Fern Hottell
Rowena Hottell

Naomi Jones
North Harrison Community
School Corporation

John “Gus” Keller
Larry & Monica Harmon
Terry Haub
Graylyn & Susannah Hebert
Ellen & Ira Hessel
Eve Ann & Lynn Stroud
Terri Train

Sandra Albin LaDuke
Arlene Hargrave

Pauline Lind
Dawn & Dave Scheffer

Charles Lynch
Robert & Patricia Harmon

Ron Middleton
Rodney & Charlotte Bemiller
Bennett & Bennett Insurance,
Inc.
Jim & Donna Costin
Joe & Anna Curts
Cheryl Fisher
Steve & Linda Gilliland
Derrick Grigsby
James & Dorothy Hannahs
Kim Harmon
Mary & George Jackson
Robert & Judith Lenfert
Mainstream Fiber Networks LLC

Barbara Middleton
Susan Pierson
Cindy & Robert Pimpis
Roger & Patricia Shepherd
Joe & Cindy Shireman
Vern & Gia Spoor
William & Joy Taylor
Bill & Debra Thomas
Joanne Thomas

Betty Lou Robson
Douglas & Sandy Sherman

Robert Smith
Elizabeth Durham
James & Carol Koetter
Bill & Norma Reutman
John & Donna Schaibley
J. Robert Shine
Mary & Guy Silva
Julius & Jean Smith
Margaret & Kevin Hoffman, Bud
& Marie Smith Family
Geneva Sprigler

Donald Thieneman
A.C. Equipment Rental, Inc.
Mary Thieneman Ande Family
Anonymous
Jay Baker
Lou Ann Baker
Carla & Charles Becht
Katie & Brian Beckort
Bennett & Bennett Insurance,
Inc.
Barbara Best
BL Anderson
Terrence & Mary Brookie
Betty Bruce

Kevin & Alisa Burch
Willis Charles, Arden & Sue
Kimberly Chatham
Wanda Chinn
Terri Clark
Lisa Cornett
Clarence & Betty Cox
Leanne & Chris Cunningham
Dan Christiani Excavating Co.,
Inc.
Robert & Beverly Davis
Delta Painting, Inc.
Donald L. Thieneman Estate
Darcy & Ava Eckart
Kyle, Renee, Mattie, & Solomon
Eckart
Sam & Becky Eckart & Maila
Vierling
Tom & Angel Ewing
Todd & Laurie Fawver
Jeff & Lisa Fawver
Charles & Sharon Fawver
Tammy Ferguson
First Harrison Bank Employees
& Board Members
Kim Harmon
Michael & Sandra Harmon
Robert Holden
Hoosier State Press Assn., Inc.
Lawrence & F. Dian Jacobi
James L. Shireman Inc.
Doug & Karen Julius
Jon & Gina Kerr
Steve Klein
Bill Sprigler & Steve Klein
Ann Knable
Koehring Heating & Air
Conditioning

James Koerber
Steve & Angie Koopman
L. Thorn Company
James LaDuke
John & Jane Lasher
Todd & Maria Lemen
Jeff & Diane Lilly
Lisa Long
MacAllister Machinery Company
Inc.
B. Arden McKim
Charles & Anita McMonigle
Marvin & Penny Miller
William & Sandra Miller
Timothy Miller
MJ Insurance
Monroe Shine & Co., Inc.
Porter & Doris Nash
O’Bannon Publishing staff
Jonathan & Saundra O’Bannon
Peterson & Matz, Inc.
Gary & Theresa Pope
Stephen & Barbara Priest
Steve & Donna Resch
Cynthia Ries
Stephen & Anne Robertson
Lawrence & Marilyn Roth
Mick & Michele Saulman
Robert & Teresa Schickel
Shepherd Insurance LLC
Robert & Marilyn Shewmaker
Joe & Cindy Shireman
David Shireman
Mark & Kathy Shireman
Ben, Mandy & Lilly Shireman
Jeff, Veronica, Abby, Luke &
Natalie Shireman

Michael & Roseanne Shireman
D. Neil & Cynthia Sisloff
Steven & Jeni Smith
Somerset CPAs, P.C.
Southern Indiana Electrical &
HVAC
Bill Sprigler
Richard & Delores Striegel
Marcella Stumler Family
Sweney Electric Co. Inc.
The Henry P. Thompson Co.
Kenneth & Shannon Thieneman
Marilyn Thieneman
Steven Thieneman
Thieneman Group LLC
Barbara Thomas
Bill & Debra Thomas
Vaughn & Linda Timberlake
Eric Watkins
Whayne Supply Co.
Donald & Judith O’Bannon
Willsey
Darrin & Leah Windell
Mark & Melinda Wiseman

Arthur Timberlake
Douglas & Sandy Sherman

Phillip Timberlake
Mary Lou Baker
Joann Cabell
Ruth Ann Capelle
Edward Gaubatz
Janet Gorin
Norma Taylor
Bridget Timberlake
Delores Timberlake
Margaret Walker

2017 Individual and Corporate Donors

Abby Sutherland Memorial
Scholarship Fund
Susan & Eric Aldridge
Malvin & Darla Algood
Michael & Christina Allen
Terry & Janice Allen
AmazonSmile Foundation
Thomas & Cynthia Andres
Anonymous
Austin Law Office
Randall & Marla Jo Baelz
Ann Baker
Robert & Sheree Banet
Joyce & Clyde Beard
Lezli Becht
Juanita Susie Benham
Bennett & Bennett Insurance,
Inc.
Holly & Gary Bernardi
Jack, Therese & Michelle
Beyerle
Bill's on the Hill
Donn Blank
James & Martha Blank
Blue River All Stars 4-H Club
Lydia Bond
Pat & Cheryl Book
William & Kristi Bowsman
Boys & Girls Clubs of Harrison-
Crawford Counties
Nathan & Katie Broom
Debra & Warren Broughton
Delores & Ricky Brown
Wayne & Donna Buchinsky
Ashley & David Bullington
Bruce & Elizabeth Burch
Paul & Linda Burnham
Kathy Byerly
Shaun & April Cain
Jennie & Daniel Capelle

Central Barren United Methodist
Church
Robert & Kathleen Chinn
Chad & Jessica Clunie
Billy Cody
Janice Coleman
Community Foundation of
Southern Indiana
Community Unity Inc.
Kelly & James Compton
Roselea Conrad
Patricia Conway
Judy & Tracy Cooper
Corydon Central High School
Class of 1962
Corydon Central High School
Industrial Arts Club
Corydon Dulcimer Society Inc.
Corydon Elementary School PTO
Corydon Intermediate School
Corydon United Methodist
Church Trustees
Crawford County 4-H Council,
Inc.
Barbara & Phillip Crecelius
Scott & Rhonda Crecelius
Dennis & Jane Cromwell
Leanne & Chris Cunningham
Joe & Anna Curts
Dakkota Integrated Systems LLC
Daramic
Christi Darnall
Simon & Janet Davis
Audrey & Joshua Ehlers
Larry & Linda Elder
Elizabeth Lions Club
Linda Emily
Melissa & Craig Engleman
Richard Engleman
Margaret Ewbank

Toney & Lisa Felker
Jerry & Jill Finn
Walter & Mary Beth Finn
Cheryl Fisher
Carolyn Gettelfinger
Steve & Linda Gilliland
Gaylen & Carol Ann Goldsmith
Janet & Ronald Grantz
Derrick Grigsby
Timothy & Sarah Ground
John & Kim Gunther
Denise & John Hagan
Jerry & Evelyn Hardsaw
Kim Harmon
Charles & Martha Harris
Thomas & Spring Harris
Harrison County Community
Services
Harrison County Farm Bureau
Inc.
Harrison County Hospital
Harrison REMC
Bill & Kim Harrod
David & Kayla Harvey
Terry Haub
Sabrina Haug
Hayswood Theatre Inc.
Lisa & Keith Heck
Heidelberg United Methodist
Church
Heidelberg United Methodist
Women
Michael Heiligenberg

Heritage Ford-Mercury Inc.
Paul & Louise Hess
Gary Hottle
Mike House
Ray & Gerry Housel
David Howey
Charles & Tracye Huber
Independent Colleges of Indiana
Indian Creek Trail
Indiana Utilities Corporation
Jacobi Oil Service, Inc.
Gerald & Yvonne Kay Jacobs
Jasper Engines & Transmissions
Inc.
Jay Gajanand Inc.
Trevor Jones
Curtis Jordan
Junior Leaders
Kappa Kappa Kappa Inc. Beta
Chi Chapter
Kristin Kennedy
Lara Kennedy
Roland & Kathleen King
Eric & Cynthia Knight
Joseph & Pamela Kraft
Merle & Dorothy Kruer
Phillip Kruer

James LaDuke
Lambertus Trust Fund
Lanesville Community School
Corporation
Lanesville Jaycees Inc.
Leland and Jeanine Lang
Sharisse Lasher
LG&E & KU Capital Corp.
Anthony & Alisa Lieber
Lisa Long
Charles Lynch
Elizabeth Magner
Main Street Corydon IN Inc.
Charles & Anita McMonigle
Harry & Barbara Middleton
Sheila Milburn
Jack & Debra Miles
Joe & Connie Miller
Charles Mills
Susan Mills
Danny & Janice Mitchell
Thomas Mullins
Mulzer Crushed Stone, Inc.
Jamie Nale
Robert & Jennifer Ann Naville
New Albany Deanery Catholic
Youth Ministries
New Amsterdam Boat Club
New Middletown Lions Club
New Salisbury Lions Club
Eva North
Norton Healthcare
Dakota Novak
Bea Oppel
Overlook Steakhouse
PACT Inc.
Carol Parr
Travis & Johnna Parr
Amy Patton
Andrew Pfeifer

Pfeiffer's Jewelers
Susan Pierson
Ramsey Lions Club
Michael Rawert
Michael & Shirley Raymond
Peggy Reed
Ren Construction LLC
Charles & Jill Robertson
Juan & Rudee Rodríguez
Stephanie Ross
Jill Rowe
Helen Sample
Larry & Tressa Schell
Schmidt Enterprises
Cynthia Schneider-Zollman
Nancy & Robert Schoen
Charlie & Judy Sell
Richard Shawler
W.G. & K.E. Sheller
Douglas & Sandy Sherman
Ralph & Barbara Sherman
Joe & Cindy Shireman
Steven & Grace Short
Kathy Skinner
Aireann Smith
Donald & Mary Smith
Glenn & Dawn Smith
Leona Smith
Linda & Ricke Smith
Matthew Smith
John W. Abel & Nancy S. Smith
Nicholas & Lesa Smith
Samuel & Rhonda Smith
St. John's Lutheran Church
Brett Stilwell
David & Mary Dee Storey
Daniel & Jane Sundberg
Alvin Sutherland
Mary & Michael Temple
Bill & Debra Thomas

Michael & Thelma Thomas
Levi & Tana Thompson
Vivian Timberlake
Town of Corydon
Town of Elizabeth
Sarah Travis
Tommy & Barbara Troncin
Thomas & Phyllis Tucker
United Methodist Foundation of
Indiana Inc.
John & Inez Voyles
Samuel Voyles
Ronnie Wallbrown
Rita & Bryan Ward
Claude Watson
Debra & Dale Watson
Michael & Cynthia Whalen
Suzan White
Doug Sellers & Sally Williar
Judith O'Bannon Willsey
Frank & E. Jane Wiseman
Michael & Jennifer Wiseman
Joan Witte
Matthew Woertz
Patsy Wofford
Carl & Mary Catherine Wolford
Matthew & Paige Wood
Charles Yeager
Iris Yeager
Kent & Joy Yeager
YMCA of Harrison County
Andrew & Nicole York
Mary Zaring

Our Mission

Our mission is to inspire and assist everyone to experience philanthropy, producing positive and sustainable growth in Harrison County.

Our Vision

Our vision is to grow Harrison County into the best community to live, work and raise a family.

Our Values

We value generosity, integrity, sustainability, stewardship, innovation, collaboration, inclusion, and excellence.



1523 Foundation Way
Post Office Box 279
Corydon, IN 47112
(812) 738-6668
hccindiana.org



